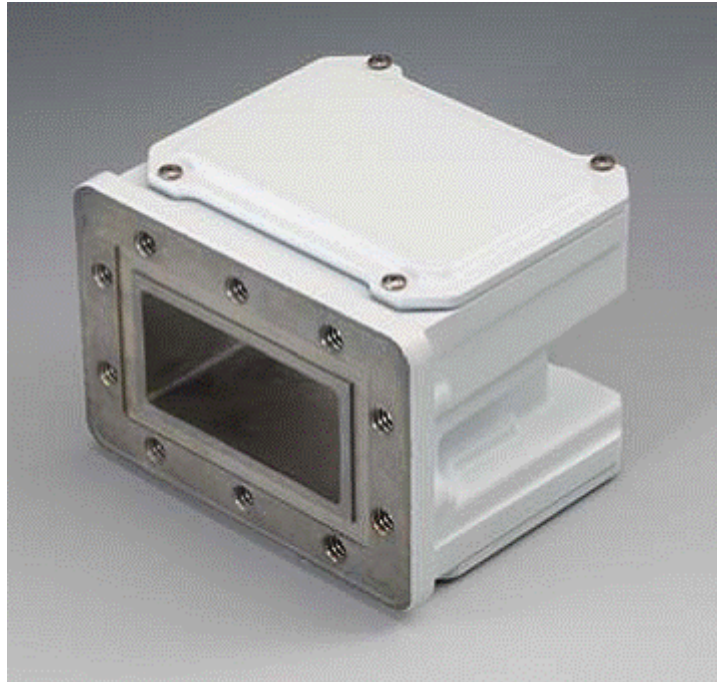


# C-band PLL LNB



## C-band PLL LNB

< Features >

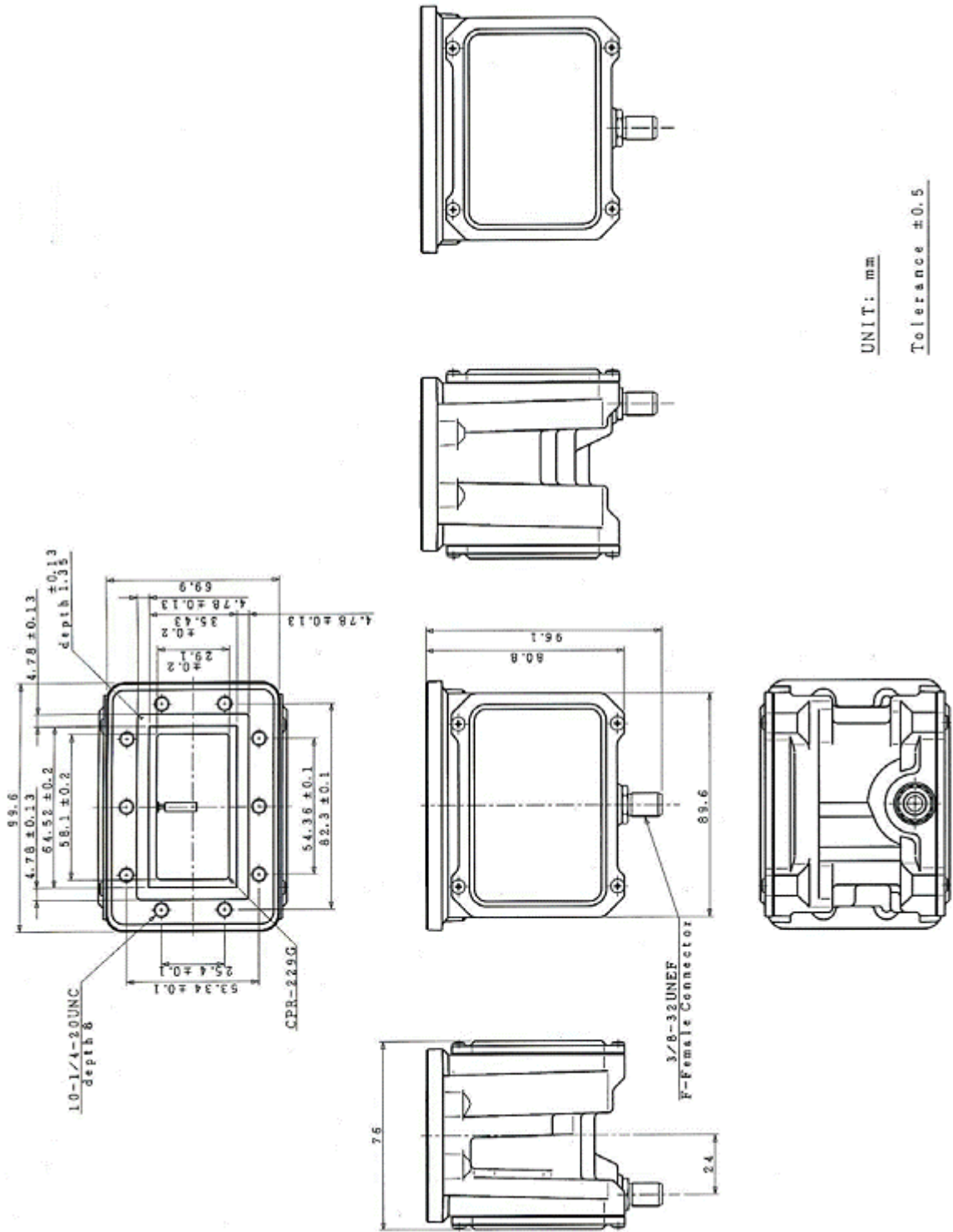
- \* Small Size & Light Weight
- \* Low Noise Figure
- \* RoHS Compliance

<Specifications>

Item	Specifications
Input Interface	CPR-229
Output Interface	F-type, female (75 ohm) [Model No. NJS8487H / 87S] N-type, female (50 ohm) [Model No. NJS8487HN / 87SN]
Noise Figure	30 K max.
Conversion Gain (at 25C)	59 dB min.
Conversion Gain Variation (at 25C)	5 dB p-p max. @575MHz BW
Phase Noise (SSB)	-70 dBc/Hz @ 100Hz    -80 dBc/Hz @ 1kHz -85 dBc/Hz @ 10kHz    -90 dBc/Hz @ 100kHz
Spurious	-140 dBm max. At input, unrelated to test CW signal. -50 dBc max. With test CW signal -10 dBm IF output (measured specified IF band)
Power Requirement	+12 to +24 V dc
Operating Current	350 mA max.
Operating Temperature	-40 to +60 degrees C

Storage Temperature	-40 to +80 degrees C
Size	96.1 mm (L) x 99.6 mm (W) x 76 mm (H) [3.78" (L) x 3.92" (W) x 2.99" (H)]
Weight	800 g max.[1.76 lbs]

<Outline Drawing>



<b>NJS8476/78/79 series C-band / Insat C-band / Palapa C-band PLL-LNB - Internal Reference Type</b>					
Model No.	RF Frequency	Local Frequency	Local Stability(-40 to +60 )	IF Frequency	IF Connector
NJS8476H	3.400 to 4.200 GHz (Palapa C-band)	5.15 GHz	+/- 10 ppm	950 to 1,750 MHz	F-type
NJS8476HN					N-type
NJS8476S			+/- 3 ppm		F-type
NJS8476SN					N-type
NJS8478H	4.500 to 4.800 GHz (Insat C-band 1)	5.76 GHz	+/- 10 ppm	960 to 1,260 MHz	F-type
NJS8478HN					N-type
NJS8478S			+/- 3 ppm		F-type
NJS8478SN					N-type
NJS8479H	4.500 to 4.800 GHz (Insat C-band 2)	5.95 GHz	+/- 10 ppm	1,150 to 1,450 MHz	F-type
NJS8479HN					N-type
<b>NJS8486/87/88 series</b>					
Model No.	RF Frequency	Local Frequency	Local Stability (-40 to +60 )	IF Frequency	IF Connector
NJS8486H	3.4 to 4.200 GHz(Palapa C-band)	5.15 GHz	+/- 10 ppm	950 to 1,750 MHz	F-type
NJS8486HN					N-type
NJS8486S			+/- 3 ppm		F-type
NJS8486SN					N-type
NJS8487H	3.625 to 4.200 GHz (C-band)	5.15 GHz	+/- 10 ppm	950 to 1,525 MHz	F-type
NJS8487HN					N-type
NJS8487S			+/- 3 ppm		F-type
NJS8487SN					N-type
NJS8488H	4.500 to 4.800 GHz (Insat C-band 1)	5.76 GHz	+/- 10 ppm	960 to 1,750MHz	F-type
NJS8488HN					N-type
NJS8488S			+/- 3 ppm		F-type
NJS8488SN					N-type
<b>NJS8476/77/78 series C-band / Insat C-band / Palapa C-band PLL-LNB - External Reference Type</b>					
Model No.	RF Frequency	Local Frequency	Local Stability (-40	IF Frequency	IF Connector

			to +60 )		
NJS8476E	3.400 to 4.200 GHz (Palapa C-band)	5.15 GHz	Depends on external reference	950 to 1,750 MHz	F-type
NJS8476EN					N-type
NJS8477E	3.625 to 4.200 GHz (C-band)	5.15 GHz		950 to 1,525 MHz	F-type
NJS8477EN					N-type
NJS8478E	4.500 to 4.800 GHz (Insat C-band)	5.76 GHz		960 to 1,260 MHz	F-type
NJS8478EN					N-type